

The *Greening* of the States

“A Roundtable Discussion”

Lenora Kingston, C.T.E.
State Travel Manager
State of Colorado



**NATIONAL BUSINESS
TRAVEL ASSOCIATION**
Connecting the Business Travel World

In the Media . . .

Carbon Emissions Across the United States

The New York Times

May 30, 2008

- Electric power production and transportation are the two largest sources of carbon emissions in the United States. But there are big differences in emissions between companies, and from state to state, that may make it harder to reach any agreement on cuts.

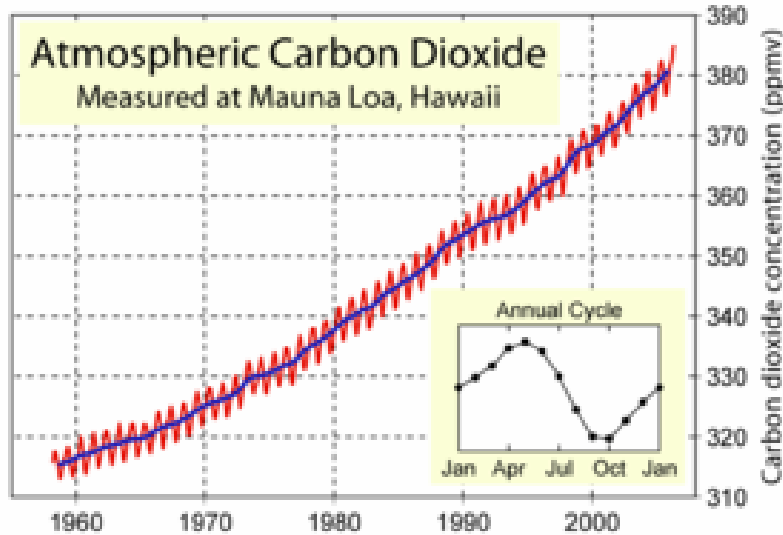
http://www.nytimes.com/interactive/2008/05/30/business/20080601_ENERGY_GRAPHIC.html#



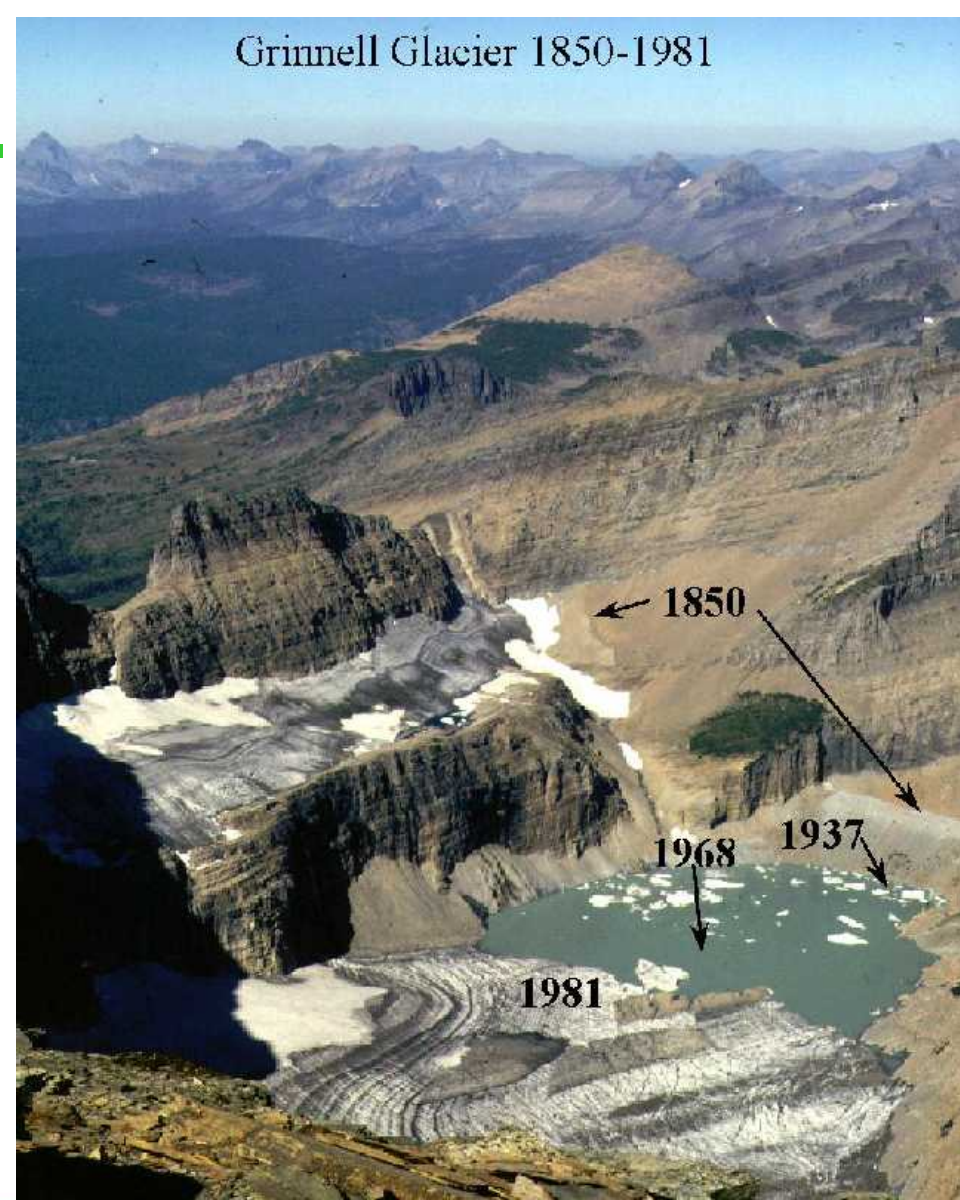
**NATIONAL BUSINESS
TRAVEL ASSOCIATION**
Connecting the Business Travel World

Facts of the matter . . .

Grinnell Glacier



“Carbon Dioxide is invisible but receding glaciers are not”



**NATIONAL BUSINESS
TRAVEL ASSOCIATION**
Connecting the Business Travel World

The CO₂ perspective . . .

A Ton of CO₂ is emitted when **YOU**:

- Travel 2,000 miles in a plane
- Drive 1,350 miles in a large SUV
- Drive 1,900 miles in a mid-size car
- Drive 6,000 miles in a hybrid car
- Run an average US household for 60 days
- Have your computer on for 10,600 hours
- Graze one Ugandan dairy cow for 8 months

Average CO₂ emissions per year:

- 4.5 tons for the average US car
- 4.5 tons for the average global citizen
- 6.2 tons for electricity use of average US household
- 2.1 tons for the average US resident
- 1.5 million tons for a 500MW gas power plant
- 8.3 million tons for an older 1,000 MW coal plant
- > 25 billion tons for the planet as a whole



¹ A Consumer's Guide to Retail Offset Providers *by Clean Air- Cool Planet*



**NATIONAL BUSINESS
TRAVEL ASSOCIATION**
Connecting the Business Travel World

Corporate Social Responsibility. . .

Corporate Social Responsibility (CSR) - Evolving term, without a standard definition

Balance of **economic, environmental and social imperatives**

Set of policies, practices and programs integrated into business operations

Voluntary actions above minimum legal compliance requirements

CSR activities typically address:

Health and safety

Environmental protection

Human rights

Corporate governance

Community development

- Consumer protection
- Labor protection
- Supplier relations
- Stakeholder rights



**NATIONAL BUSINESS
TRAVEL ASSOCIATION**
Connecting the Business Travel World



Governor's
Energy Office

Leading the way . . .

- State government will:
 - reduce **energy** consumption,
 - increase the use of **renewable energy** sources,
 - increase the **energy efficiency**
 - decrease the environmental impact of the state vehicle fleet,
 - implement **environmental** purchasing standards
 - **reduce** waste and increase **recycling**.



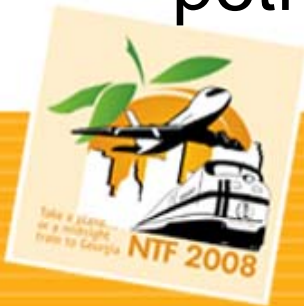
**NATIONAL BUSINESS
TRAVEL ASSOCIATION**
Connecting the Business Travel World

Plan of action . . .



Governor's
Energy Office

- The Greening Government goals Colorado state government seeks to achieve by June 30, 2012 are:
 - 20% reduction in energy use
 - 20% reduction in paper use
 - 10% reduction in water consumption
 - 25% volumetric reduction in state vehicle petroleum consumption



**NATIONAL BUSINESS
TRAVEL ASSOCIATION**
Connecting the Business Travel World

Reporting . . .

- Each state department and campus will create a **sustainability** management system to track and report their greening government performance. The Council prepares an annual report card to the Governor.



**NATIONAL BUSINESS
TRAVEL ASSOCIATION**
Connecting the Business Travel World

Transparency . . .



Governor's
Energy Office

"INVITATION TO ATTEND BILL-SIGNING CEREMONY AT ALAMOSA SOLAR POWER PLANT ON JUNE 2, 2008, HIGHWAY 17 & LANE 8 NORTH"

Please join Gov. Ritter, State Sen. Gail Schwartz and others as Gov. Ritter signs a number of important bills into law. The Governor will be signing the following bills:

HB 1164 (Solano/Schwartz), New Solar Energy Technologies



**NATIONAL BUSINESS
TRAVEL ASSOCIATION**
Connecting the Business Travel World

Reduce, Reuse, Recycle . . .

- 40 Refrigerators
 - 1100-2700 kilowatt hours per year (kWh)
- Replacements
 - 450 kWh per year
 - 75% Reduction
- Recycle Parts



Governor's
Energy Office



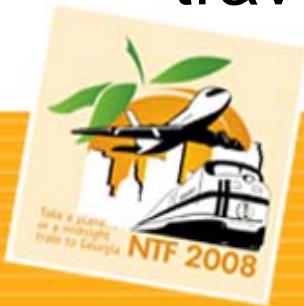
"This refrigerator is so old . . .
. . .it might have been used as a prop
in the *The Honeymooners*."



NATIONAL BUSINESS
TRAVEL ASSOCIATION
Connecting the Business Travel World

Travel initiatives . . .

- Executive Order
 - “When traveling on state business, all state employees shall give preference to major airports that are physically closest to the destination, with preference given to airports that are served by a **mass transit** system unless such option is not *cost effective*. Employees *shall use* **mass-transit** when traveling whenever feasible.”



**NATIONAL BUSINESS
TRAVEL ASSOCIATION**
Connecting the Business Travel World

Lodging . . .

- Showcase “*Environmentally Preferable*” Properties
- *Green Seal*® Environmental Standards for Lodging Properties
- Lodging Directory Available On-line **ONLY**



**NATIONAL BUSINESS
TRAVEL ASSOCIATION**
Connecting the Business Travel World

Auto Rental . . .

- Procurement
 - Flex-fuel Options
 - Hybrid vehicles
- Education
 - Website
 - Vehicle options
 - Promote environmental responsibility



**NATIONAL BUSINESS
TRAVEL ASSOCIATION**
Connecting the Business Travel World

Remember . . .



- Reduce – Reuse – Recycle
 - People – Planet – Profit
 - Avoid – Reduce – Offset



**NATIONAL BUSINESS
TRAVEL ASSOCIATION**
Connecting the Business Travel World



Thank-you for your time &
attention!



**NATIONAL BUSINESS
TRAVEL ASSOCIATION**
Connecting the Business Travel World